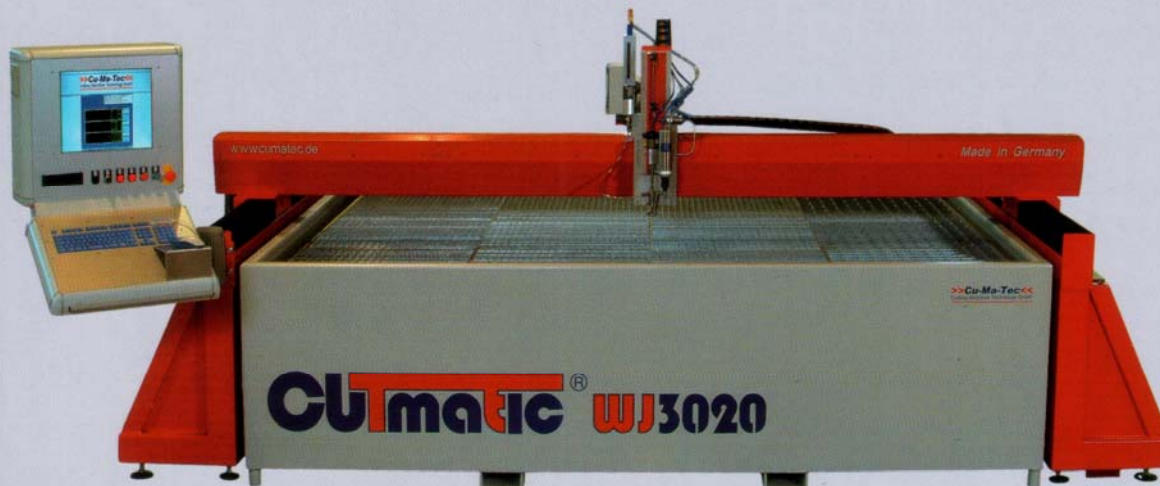


# >> **Cu-Ma-Tec** <<<

Cutting Machine Technology GmbH



- >> **modular structure**
- >> **ergonomic table structure**
- >> **windows XP<sup>(1)</sup> pc control**
- >> **remote maintenance**
- >> **highly exact gantry drives**
- >> **24 month warranty**
- >> **Made in Germany**

**the world of cutting**

## CUTmatic® types

Typ	CUTmatic LC	CUTmatic WJ2010	CUTmatic WJ3020	CUTmatic WJ3060
work area	1000x500	2000mm x 1000mm	3000mm x 2000mm	3000mm x 6000mm
setup measurements (BxLxH)	1500x1500x1300	2700x2750x1600	4500x2800x1600	4500x6800x1600
maximum speed	800mm/min	12.000 mm/min	15.000 mm/min	15.000 mm/min
accuracy	+/- 0,08 mm/m*	+/- 0,08 mm/m*	+/- 0,08 mm/m*	+/- 0,08 mm/m*
reversal play	0,3 mm*	0,03 mm*	0,03 mm*	0,03 mm*
weight (without water)	2000 kg	2900kg	3500 kg	5000 kg
cut head number	1	1-2	1-4	1-4
number of drives	2	3-5	4-7	4-7
medium	water	water	water	water
3D option possible	no	yes	yes	yes
angle error compensation	no	optionally	optionally	optionally
automatic height control	no	optionally	yes	yes
nesting software	optionally	optionally	optionally	optionally
CNC generator with pc-controller	yes	yes	yes	yes
manual control unit with a joystick	optionally	yes	yes	yes
collision protection	no	optionally	yes	yes

\* completely workarea temperature 20 C°

- >> **highest precision and dynamics**
- >> **maintenance free drives with gantry functions provide a precise cut**

### options:

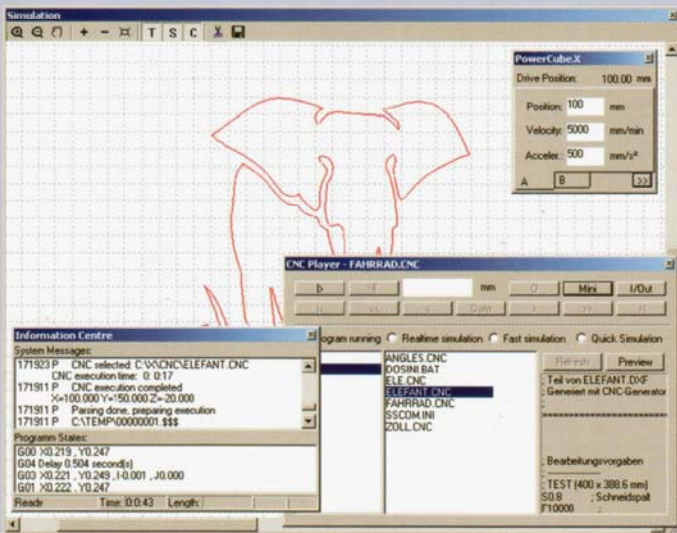
- >> **retrofit cutting heads up to 2**
- >> **manual control unit with a joystick**
- >> **lowerable water level for underwater cut**
- >> **3-D add-on kit adjustment of cutting angle compensation**
- >> **automatic abrasive sand output (ASAS)**
- >> **automatic height control with collision protection**



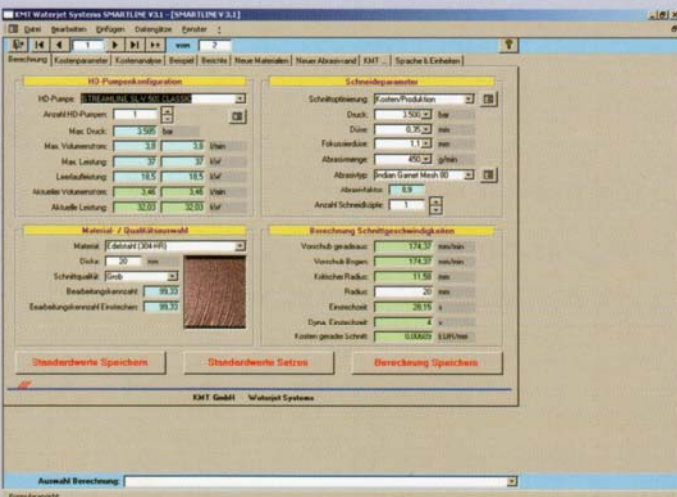
Picture:  
CUTmatic® cutting head

## COS4MOS - software

- >> the import of DXF, IGES and BMP files as well as standard CNC programming are possible
- >> integrated material database with operations specific parameters
- >> back drive on the outline
- >> simulation of the process transaction
- >> nesting
- >> cutting costs calculation program
- >> separate computers for controller software and machine operation
- >> easy integration of controller software into existing networks



Picture:  
Printscreen COS4MOS



Picture:  
Printscreen cutting costs  
calculation program

W  
A  
N  
G  
U  
-  
M  
a  
-  
T  
e  
c  
h  
n  
o  
l  
o  
g  
y

# the world of cutting

## Maximum Cutting Speeds at 4100 bar

Cutting Speed - mm/min with 0,35mm Orifices and 1,10 mm

Thickness	Stainless Steel	Titanium	Aluminum	Marble
2 mm	2800	1800	3300	14500
5 mm	1010	800	1150	5050
10 mm	450	350	520	2275
20 mm	205	120	235	1025
50 mm	71	42	81	360
100mm	32	18	37	160

**>>Cu-Ma-Tec<<**  
*Cutting Maschine Technology GmbH*

Cu-Ma-Tec GmbH  
Böhmstraße 2  
D - 98544 Zella-Mehlis

web  
e-Mail  
fon  
fax

www.cumatec.de  
info@cumatec.de  
+49 3682 469165  
+49 3682 469167

dealer address